



# The Aurora 2.0

3 - 5 Bedrooms | 3.5 - 5.5 Bathrooms | Starting at 2,701 SQFT

The Aurora is a dramatic design that is in a class of its own.

The Aurora forgoes the traditional foyer for a welcoming front porch and impressive entry into the main living space. The main space creates a sense of place and togetherness, and the flexible arrangement allows for anything your life can throw at it. The Aurora features the signature dead end great room and flexible dining areas.

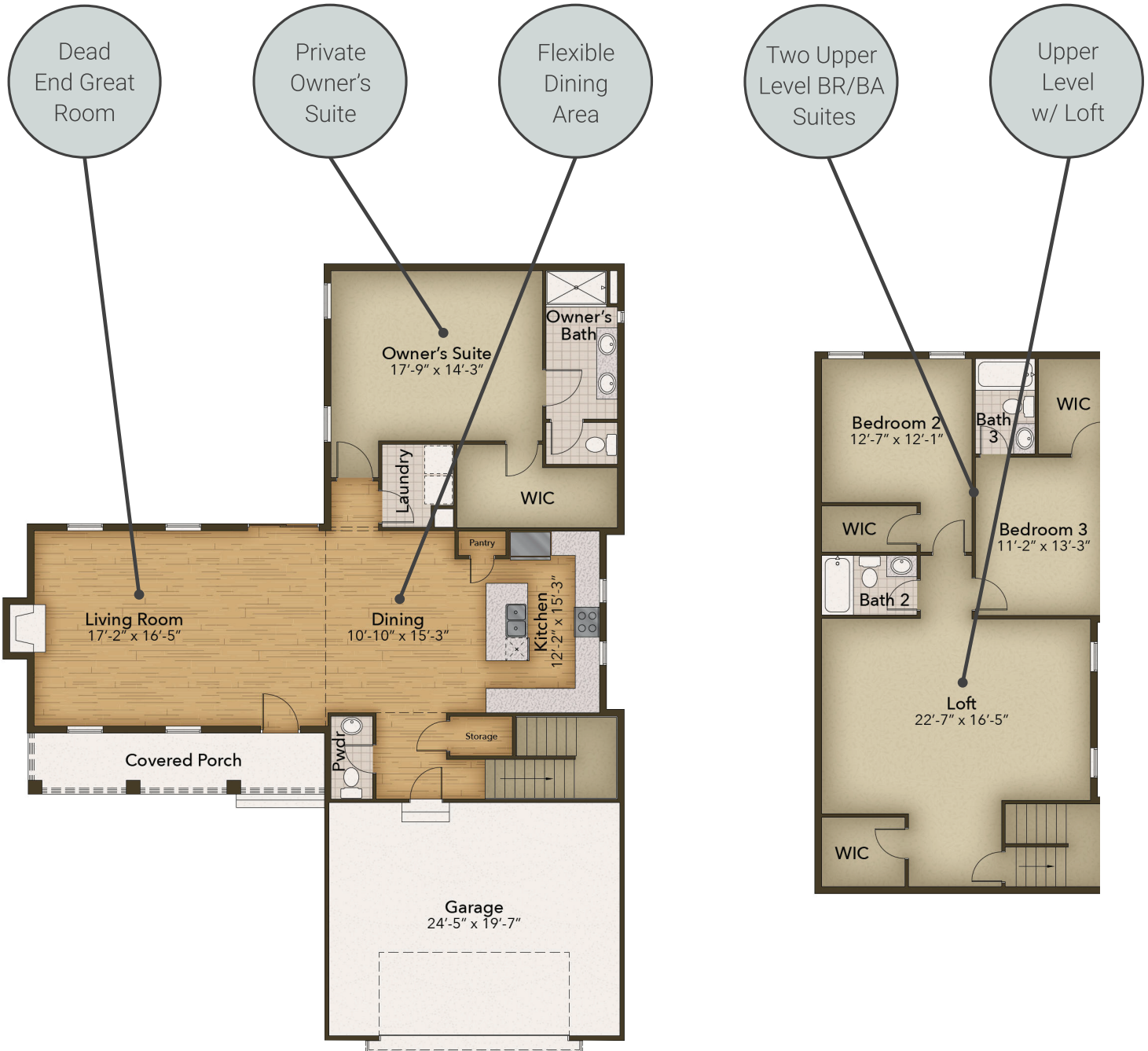
The unique footprint of the Aurora allows for a seamless integration of outdoor and indoor spaces. The private owner's retreat allows for light and ventilation while preserving privacy.





# The Aurora 2.0

3 - 5 Bedrooms | 3.5 - 5.5 Bathrooms | Starting at 2,701 SQFT



## Options Available:

- Main Living Extensions
- 3 Car Garage Options
- Upper Levels can add up to 3BR or Loft/Home Office
- Fireplace Options
- Luxury Owner's Suite
- Sunroom